



Welcome to your Discovery Box

Here you will find an array of exciting activities and fun facts to prepare you for your next unit of study.

Inside this Discovery Box you will find:

- fun facts and information
- craft activities
- puzzles and games
- a recommendation of books to look for in the library

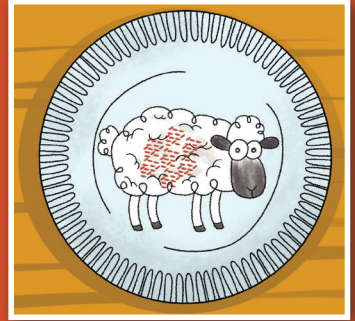
We hope you find these activities engaging and entertaining, but most of all that they make you **curious** to learn more.

Grow your own cotton wool cress lamb

Can you grow your own cress at home?

Materials Needed

- Paper plate
- Cotton wool
- Cress seeds
- Pencils to decorate
- Glue
- Water



Instructions

1. Draw a lamb on the plate—make sure you give the lamb a large body.
2. Spread some glue on the lamb's body and press on the cotton wool.
3. Allow the glue to dry.
4. Carefully wet the cotton wool (don't use too much water).
5. Sprinkle your cress seeds onto the cotton wool.
6. Place your plate on a windowsill, or somewhere that receives natural light.
7. Make sure your cotton wool stays damp by adding water when you need to.
8. Watch your seeds grow—they will be ready to eat in 7–14 days.
9. When they are ready, just cut them with scissors and eat them!



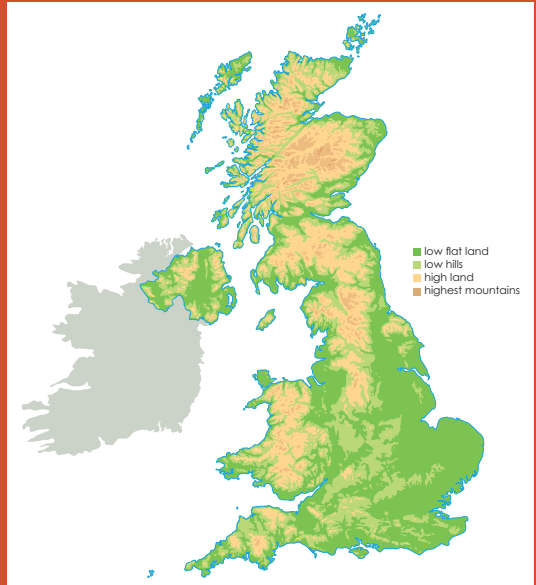
Fun Facts about land in the United Kingdom

The United Kingdom (UK) is in Western Europe and is an island country. It is made up of England, Scotland, Wales, and Northern Ireland.

The UK has nearly 245,000 square kilometres of land, which is used in many different ways. Not much of the land in the UK is built on. When it is, it is mainly for cities and towns. Around half of the land is used for farming. Around a third of the land is protected natural land. Most natural land is found in Scotland (where you will also find the highest UK Mountain, Ben Nevis). The largest cities are found in England.

England is the largest country in the UK, and most of the land is flat, which makes it perfect for farming. Farmers raise animals or grow crops in the fields. The landscape is rockier in the North and West, here you can find the Cumbrian Mountains and Lake District. The Pennines are a chain of hills and moorlands that split Northern England into East and West. In the South of England you can find dramatic chalk cliffs.

There are many rivers in England, including the Thames, Tyne, Mersey, and Ouse. The longest is the River Severn, which actually begins in Wales. There is also a lot of coastline. The coastline is where the land meets the sea and, because the UK is an island, the coastline goes the whole way around it.



Can you solve this word search?

Y	A	Y	Y	A	M	V	V	P	J	T	W	F	Z	Z	D	U	L
H	H	G	Q	H	I	O	O	Z	N	P	V	D	J	M	E	R	A
Z	Z	F	R	L	P	S	U	E	R	K	U	M	T	K	B	B	N
R	O	R	L	I	K	A	M	N	M	Z	O	H	D	W	K	A	D
K	T	A	A	Y	C	E	R	A	T	D	O	A	X	K	O	N	U
Q	G	O	H	V	L	U	J	G	G	A	Y	S	E	S	E	I	S
E	T	Q	W	T	P	W	L	N	O	C	I	L	N	T	I	S	E
Y	X	E	T	P	N	I	I	T	O	P	K	N	O	H	R	A	T
O	T	E	L	A	N	K	R	U	U	R	O	A	I	C	C	T	B
M	S	F	B	M	D	C	N	Q	D	R	A	T	T	M	I	I	J
P	C	R	I	E	A	T	T	U	R	Z	A	Q	A	R	T	O	O
H	U	K	T	V	R	H	B	D	Z	X	P	L	L	T	Y	N	L
O	Z	I	F	Y	G	N	I	M	R	A	F	C	U	L	O	F	I
N	N	J	S	A	H	V	K	I	L	N	D	D	P	A	G	W	R
U	I	I	A	N	R	I	V	E	R	Z	V	C	O	R	P	A	N
I	D	S	E	T	A	N	I	D	R	O	O	C	P	U	H	J	H
E	A	S	T	H	T	R	O	B	J	O	F	M	E	R	B	D	R
G	R	I	D	R	E	F	E	R	E	N	C	E	Y	U	C	Q	W
Z	Y	G	R	E	E	N	B	E	L	T	A	X	M	R	K	L	D

AGRICULTURAL

CITY

COORDINATES

COUNTRYSIDE

FARMING

GREENBELT

GRID REFERENCE

HAMLET

LAND USE

MOUNTAIN

POPULATION

RIVER

RURAL

SETTLEMENT

TOPOGRAPHY

TOWN

UNITED KINGDOM

URBAN

URBANISATION

VILLAGE

DiscoveryBox

Can you locate and give the grid references of the following places on this map?

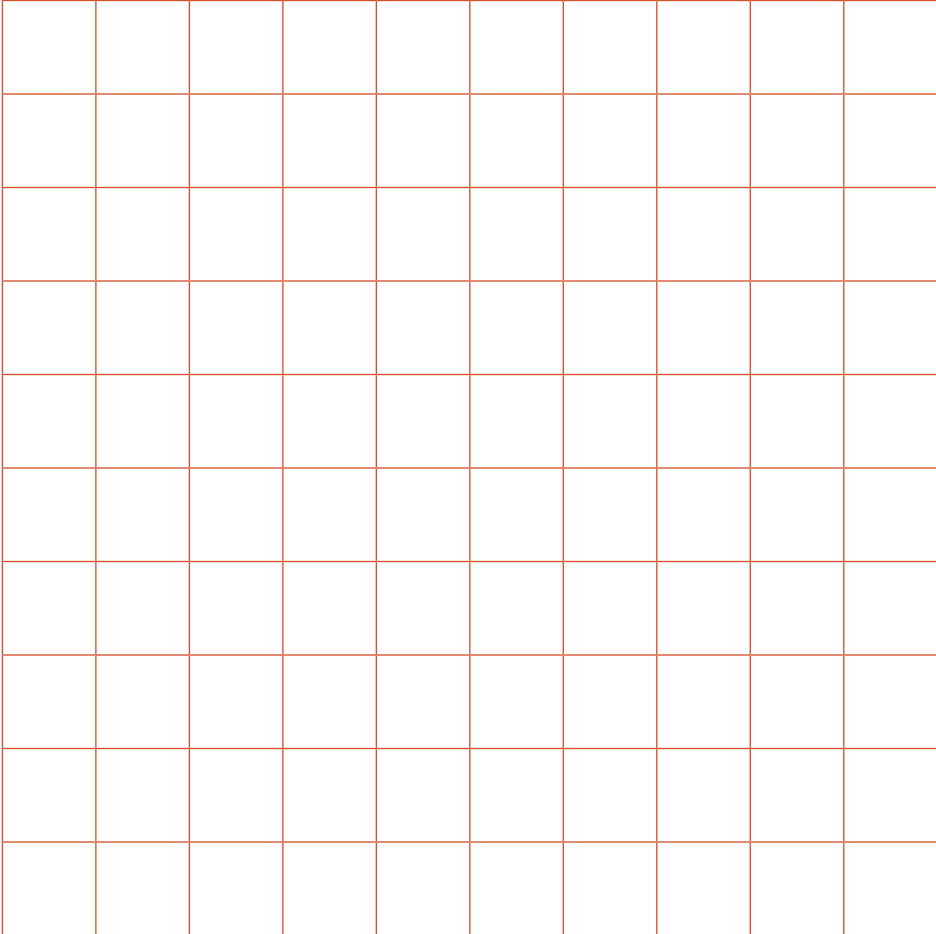
Remember to go along the x-axis before going up the y-axis. The first one has been done for you as an example:

Place	Grid reference	Place	Grid reference
Railway Station	A,5	Roysvale Park	
Grant Park		Leancoill Hospital	
Forres Golf Club		Sanquhar Loch	



Design your own settlement

Using the blank grid below, design your own hamlet, village, town, or city. Do not forget to add houses and other buildings that the people in your settlement will need.



Many of the vegetables we find in our supermarkets are actually grown here in the United Kingdom. The Union Jack flag in the Red Tractor logo confirms that your food has been born, grown, prepared, and packaged in the UK. Look out for the logo when you are shopping for your ingredients to make this tasty soup!

Carrot and Parsnip soup

Time: 30 minutes

Medium

Ingredients:

- 1 large onion
- 500g carrots
- 500g parsnips
- 1 leek
- 1 tbs olive oil
- 10g coriander
- 2 chicken or vegetable stock cubes
- 100g red lentils



Method:

- Peel and roughly chop the onion, carrots, parsnips and leek.
- Heat the oil in a large saucepan, then gently fry the onion for 2 minutes until starting to soften. Add the chopped carrots, parsnips and leek to the saucepan.
- Add red lentils and coriander—stir to mix in.
- Crumble the stock cubes into the saucepan and add 1 litre of hot water, then stir well until the stock cubes have completely dissolved.
- Put a lid on the saucepan and cook for 20 minutes until the vegetables are cooked through and soft.
- Once cooked, take the lid off, let the soup cool a little then whizz until smooth with a stick blender.
- Serve with a sprinkling of coriander leaves, and cheese on toast if wanted.

The United Kingdom

Use Google maps or an atlas to try to locate and label the following:

- England, Scotland, Wales, and Northern Ireland
- The English Channel, the Irish Sea, the North Sea and the Atlantic Ocean
- Birmingham, London, Sheffield, Glasgow, Cardiff
- The River Severn, the River Tweed, and the River Mersey
- Scafell Pike, Snowdon, and Ben Nevis.



Recommended Reading



A Pig Called Heather by Harry Oulton

Dragon Gold by Shoo Rayner

Song of the Dolphin Boy by Elizabeth Laird

The Water Horse by Dick King-Smith

The Wind in the Willows by Kenneth Grahame

